

Test Report

Client	:	Wuxi Fengrui New Energy Power Battery Co., Ltd.
Address	:	No. 5 Jingxin Road, Xibei Town, Xishan District, Wuxi City

The following sample(s) and sample information was/were submitted and identified by/on the behalf of the client

Sample Name	:	Floor-Mounted LFP Battery Module
Model/P.O. No.	:	FN310
Manufacturer	:	Wuxi Fengrui New Energy Power Battery Co., Ltd.
Received Date	:	Jul 07, 2025
Test Period	:	Jul 07, 2025~Jul 17, 2025
Test Requested	:	EU RoHS 2011/65/EU and 2015/863/EU

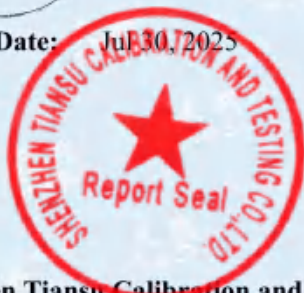
Conclusion

-	Lead(Pb), Cadmium(Cd), Mercury(Hg), Hexavalent Chromium(Cr ⁶⁺)	PASS
-	Polybromobiphenyls (PBBs) & Polybromodiphenyl ethers (PBDEs)	PASS
-	DBP, BBP, DEHP, DIBP	PASS

For Further Details, Please Refer To the Following Page(s)

Approved by:

Date: Jul 30, 2025



ShenZhen Tiansu Calibration and Testing Co., Ltd.

Add: Building 1/4, No.2, Jinlong Road, Longgang District, Shenzhen, Guangdong, China.

Tel: 0755-89457984

E-mail: tsjc@tiansu.org

Post Code: 518116

Website: www.tiansu.org

Test Method

Test Item(s)	Test Method	Equipment	MDL
Pb, Cd, Hg, Cr, Br	IEC 62321-3-1:2013	XRF	5mg/kg
Pb, Cd	IEC 62321-5:2013	ICP-OES	5mg/kg
Hg	IEC 62321-4:2013+AMD1:2017	ICP-OES	5mg/kg
Cr ⁶⁺	IEC 62321-7-2:2017	UV-Vis	5mg/kg
	IEC 62321-7-1:2015		0.10μg/cm ²
PBBs & PBDEs	IEC 62321-6:2015	GC-MS	5mg/kg
DBP, BBP, DEHP, DIBP	IEC 62321-8:2017	GC-MS	30mg/kg

Test Result(s)

- Screening test results

Test items	1	2	3	4	5	6	7	8	9
Pb	P	P	P	P	P	P	P	D	P
Cd	P	P	P	D	P	P	P	P	P
Hg	P	P	P	P	P	P	P	P	P
Cr	P	P	P	P	P	P	D	D	P
Br	/	P	P	/	P	P	/	/	P
Conclusion	P	P	P	D	P	P	D	D	P

Test items	10	11	12	13	14	15	16	17	18
Pb	P	D	P	D	P	P	D	D	P
Cd	P	D	P	P	P	D	D	P	P
Hg	P	P	P	P	P	P	P	P	P
Cr	P	P	P	P	P	D	P	P	P
Br	P	/	P	/	/	/	/	/	P
Conclusion	P	D	P	D	P	D	D	D	P

Test items	19	20	21	22	23	24	25	26	27
Pb	P	P	D	P	P	P	P	P	P
Cd	P	P	D	P	P	P	P	P	P
Hg	P	P	P	P	P	P	P	P	P
Cr	P	P	P	P	P	P	P	P	P
Br	P	P	/	/	D	D	/	D	D
Conclusion	P	P	D	P	D	D	P	D	D

Test items	28	29	30	31	32	33	34	35	36	37
Pb	P	D	P	D	P	P	P	P	P	P
Cd	P	P	P	P	P	P	D	P	P	P
Hg	P	P	P	P	P	P	P	P	P	P
Cr	P	D	P	D	P	P	P	P	P	P
Br	D	/	P	/	P	P	/	P	P	P
Conclusion	D	D	P	D	P	P	D	P	P	P

Test items	38	39	40	41	42	43	44	45	46	47
Pb	P	D	P	P	P	P	P	P	P	P
Cd	P	D	P	P	D	P	P	P	P	P
Hg	P	P	P	P	P	P	P	P	P	P
Cr	P	P	P	P	P	P	P	D	P	P
Br	D	/	D	D	/	D	D	/	P	P
Conclusion	D	D	D	D	D	D	D	D	P	P

Test items	48	49	50	51	52	53	54	55	56	57
Pb	P	P	P	P	P	P	P	P	P	P
Cd	P	P	P	P	P	P	P	P	P	P
Hg	P	P	P	P	P	P	P	P	P	P
Cr	P	P	P	D	D	P	D	P	P	P
Br	D	D	D	/	/	D	/	P	P	P
Conclusion	D	D	D	D	D	D	D	P	P	P

Test items	58	59	60	61	62	63	64	65	66	67
Pb	P	P	P	P	P	P	P	P	P	P
Cd	P	P	P	P	P	P	D	P	P	D
Hg	P	P	P	P	P	P	P	P	P	P
Cr	P	P	P	P	P	P	P	P	P	P
Br	D	/	D	/	P	/	/	/	P	/
Conclusion	D	P	D	P	P	P	D	P	P	D

Test items	68	69	70	71	72	73	74	75	76	77
Pb	P	D	P	P	P	P	P	P	P	P
Cd	P	P	P	P	D	D	P	P	D	P
Hg	P	P	P	P	P	P	P	P	P	P
Cr	P	P	P	P	P	D	P	P	D	P
Br	P	/	P	P	/	/	/	D	/	P
Conclusion	P	D	P	P	D	D	P	D	D	P

Test items	78	79	80	81	82	83	84	85	86	87
Pb	P	D	P	P	P	P	P	P	P	D
Cd	P	P	P	P	P	P	D	P	P	P
Hg	P	P	P	P	P	P	P	P	P	P
Cr	P	P	P	P	P	P	P	P	P	P
Br	P	/	P	P	P	/	/	P	P	/
Conclusion	P	D	P	P	P	P	D	P	P	D

Test items	88	89	90	91	92	93	94	95	96	97
Pb	P	P	P	P	P	P	P	P	P	P
Cd	P	P	D	P	P	P	P	P	P	D
Hg	P	P	P	P	P	P	P	P	P	P
Cr	P	P	P	P	P	P	P	P	P	P
Br	D	/	/	P	P	P	P	P	P	/
Conclusion	D	P	D	P	P	P	P	P	P	D

Test items	98	99	100	101	102	103	104	105	106	107
Pb	P	P	P	P	P	P	P	D	P	P
Cd	P	P	P	P	P	P	P	P	P	P
Hg	P	P	P	P	P	P	P	P	P	P
Cr	P	P	P	P	P	P	P	P	P	P
Br	P	P	P	P	P	P	/	/	P	P
Conclusion	P	P	P	P	P	P	P	D	P	P

Test items	108	109	110	111	112	113	114	115	116	117
Pb	D	P	P	P	P	D	P	P	P	D
Cd	D	P	P	P	P	D	P	P	P	P
Hg	P	P	P	P	P	P	P	P	P	P
Cr	P	P	P	P	P	P	P	P	P	P
Br	/	P	P	P	P	P	P	/	P	/
Conclusion	D	P	P	P	P	D	P	P	P	D

Test items	118	119	120	121	122	123	124	125	126	127
Pb	D	P	P	P	P	P	P	P	P	P
Cd	D	P	P	P	P	D	P	P	P	P
Hg	P	P	P	P	P	P	P	P	P	P
Cr	P	P	P	P	P	P	P	P	P	P
Br	/	P	P	P	P	/	/	/	/	P
Conclusion	D	P	P	P	P	D	P	P	P	P

Note:

- It is the result on total Br while testing PBBs and PBDEs by XRF. It is the result on total Cr while testing Hexavalent Chromium by XRF.
- Results are obtained by XRF for primary screening, and chemical testing by ICP (for Cd, Pb, Hg), UV-Vis (for Cr(VI)) and GCMS (for PBBs, PBDEs) is recommended to be performed, if the concentration exceeds the below warning value according to IEC 62321-3-1:2013 (unit: mg/kg)

Element	Polymer	Metal	Composite Materials
Cd	$P \leq 70 - 3\sigma < D < 130 + 3\sigma \leq F$	$P \leq 70 - 3\sigma < D < 130 + 3\sigma \leq F$	$P \leq 50 - 3\sigma < D < 150 + 3\sigma \leq F$
Pb	$P \leq 700 - 3\sigma < D < 1300 + 3\sigma \leq F$	$P \leq 700 - 3\sigma < D < 1300 + 3\sigma \leq F$	$P \leq 500 - 3\sigma < D < 1500 + 3\sigma \leq F$
Hg	$P \leq 700 - 3\sigma < D < 1300 + 3\sigma \leq F$	$P \leq 700 - 3\sigma < D < 1300 + 3\sigma \leq F$	$P \leq 500 - 3\sigma < D < 1500 + 3\sigma \leq F$
Br	$P \leq 300 - 3\sigma < D$	/	$P \leq 250 - 3\sigma < F$
Cr	$P \leq 700 - 3\sigma < D$	$P \leq 700 - 3\sigma < D$	$P \leq 500 - 3\sigma < F$

- P=PASS, F=FAIL, D=DETECTED
- mg/kg = ppm = 0.0001%, /= Not Applicable

- Chemical test results:

Test results of Pb, Cd, Hg and Cr⁶⁺

Test Item(s)	MDL	Result(s) (mg/kg)					Limit (mg/kg)
		4	7	8	11	13	
Lead(Pb)	5mg/kg	N.D.	N.D.	N.D.	27520	28927	1000
Cadmium(Cd)	5mg/kg	N.D.	N.D.	N.D.	70	74	100
Mercury(Hg)	5mg/kg	N.D.	N.D.	N.D.	N.D.	N.D.	1000
Hexavalent Chromium(Cr ⁶⁺)#1	5mg/kg	/	/	/	/	/	1000
Hexavalent Chromium(Cr ⁶⁺)#2	0.10µg/cm ²	N.D.	N.D.	N.D.	N.D.	N.D.	/

Test Item(s)	MDL	Result(s) (mg/kg)					Limit (mg/kg)
		15	16	17	21	29	
Lead(Pb)	5mg/kg	N.D.	N.D.	N.D.	N.D.	18042	1000
Cadmium(Cd)	5mg/kg	N.D.	N.D.	N.D.	N.D.	71	100
Mercury(Hg)	5mg/kg	N.D.	N.D.	N.D.	N.D.	N.D.	1000
Hexavalent Chromium(Cr ⁶⁺)#1	5mg/kg	/	/	/	/	/	1000
Hexavalent Chromium(Cr ⁶⁺)#2	0.10µg/cm ²	N.D.	N.D.	N.D.	N.D.	N.D.	/

Test Item(s)	MDL	Result(s) (mg/kg)					Limit (mg/kg)
		31	34	39	42	45	
Lead(Pb)	5mg/kg	29412	N.D.	N.D.	N.D.	N.D.	1000
Cadmium(Cd)	5mg/kg	61	N.D.	N.D.	N.D.	N.D.	100
Mercury(Hg)	5mg/kg	N.D.	N.D.	N.D.	N.D.	N.D.	1000
Hexavalent Chromium(Cr ⁶⁺)#1	5mg/kg	/	/	/	/	/	1000
Hexavalent Chromium(Cr ⁶⁺)#2	0.10µg/cm ²	N.D.	N.D.	N.D.	N.D.	N.D.	/

Test Item(s)	MDL	Result(s) (mg/kg)					Limit (mg/kg)
		51	52	54	64	67	
Lead(Pb)	5mg/kg	N.D.	N.D.	N.D.	N.D.	N.D.	1000
Cadmium(Cd)	5mg/kg	N.D.	N.D.	N.D.	N.D.	N.D.	100
Mercury(Hg)	5mg/kg	N.D.	N.D.	N.D.	N.D.	N.D.	1000
Hexavalent Chromium(Cr ⁶⁺)#1	5mg/kg	/	/	/	/	/	1000
Hexavalent Chromium(Cr ⁶⁺)#2	0.10µg/cm ²	N.D.	N.D.	N.D.	N.D.	N.D.	/

Test Item(s)	MDL	Result(s) (mg/kg)					Limit (mg/kg)
		69	72	73	76	79	
Lead(Pb)	5mg/kg	N.D.	N.D.	N.D.	N.D.	18206	1000
Cadmium(Cd)	5mg/kg	N.D.	N.D.	N.D.	N.D.	16	100
Mercury(Hg)	5mg/kg	N.D.	N.D.	N.D.	N.D.	N.D.	1000
Hexavalent Chromium(Cr ⁶⁺)#1	5mg/kg	/	/	/	/	/	1000
Hexavalent Chromium(Cr ⁶⁺)#2	0.10µg/cm ²	N.D.	N.D.	N.D.	N.D.	N.D.	/

Test Item(s)	MDL	Result(s) (mg/kg)					Limit (mg/kg)
		84	87	90	97	105	
Lead(Pb)	5mg/kg	N.D.	N.D.	N.D.	N.D.	N.D.	1000
Cadmium(Cd)	5mg/kg	N.D.	N.D.	N.D.	N.D.	N.D.	100
Mercury(Hg)	5mg/kg	N.D.	N.D.	N.D.	N.D.	N.D.	1000
Hexavalent Chromium(Cr ⁶⁺)#1	5mg/kg	/	/	/	/	/	1000
Hexavalent Chromium(Cr ⁶⁺)#2	0.10µg/cm ²	N.D.	N.D.	N.D.	N.D.	N.D.	/

Test Item(s)	MDL	Result(s) (mg/kg)					Limit (mg/kg)
		108	113	117	118	123	
Lead(Pb)	5mg/kg	N.D.	N.D.	N.D.	N.D.	N.D.	1000
Cadmium(Cd)	5mg/kg	N.D.	N.D.	N.D.	N.D.	N.D.	100
Mercury(Hg)	5mg/kg	N.D.	N.D.	N.D.	N.D.	N.D.	1000
Hexavalent Chromium(Cr ⁶⁺)#1	5mg/kg	/	/	/	/	/	1000
Hexavalent Chromium(Cr ⁶⁺)#2	0.10µg/cm ²	N.D.	N.D.	N.D.	N.D.	N.D.	/

Note:

- mg/kg=ppm=parts per million;
- N.D.=Not Detected (<MDL); MDL=method detection limit;
- #1: For non-metal materials test.
- #2: For metal materials test:
- "Positive" indicates Cr⁶⁺ in a sample is detected above 0.13µg/cm²;
- "Negative" indicates Cr⁶⁺ in a sample is detected below 0.10µg/cm²;
- According to EU RoHS 2011/65/EU Annex III, the following components were exempt

No.	Exempted substances	Exempted items	Exempted value
11	Copper alloy	Lead(Pb)	4.0%
13	Copper alloy	Lead(Pb)	4.0%
29	Copper alloy	Lead(Pb)	4.0%
31	Copper alloy	Lead(Pb)	4.0%
79	Copper alloy	Lead(Pb)	4.0%

Test results of PBBs and PBDEs

Test Item(s)	MDL	Result(s) (mg/kg)				Limit (mg/kg)
		23	24	26	27	
Monobromobiphenyl	5mg/kg	N.D.	N.D.	N.D.	N.D.	/
Dibromobiphenyl	5mg/kg	N.D.	N.D.	N.D.	N.D.	/
Tribromobiphenyl	5mg/kg	N.D.	N.D.	N.D.	N.D.	/
Tetrabromobiphenyl	5mg/kg	N.D.	N.D.	N.D.	N.D.	/
Pentabromobiphenyl	5mg/kg	N.D.	N.D.	N.D.	N.D.	/
Hexabromobiphenyl	5mg/kg	N.D.	N.D.	N.D.	N.D.	/
Heptabromobiphenyl	5mg/kg	N.D.	N.D.	N.D.	N.D.	/
Octabromobiphenyl	5mg/kg	N.D.	N.D.	N.D.	N.D.	/
Nonabromobiphenyl	5mg/kg	N.D.	N.D.	N.D.	N.D.	/
Decabromodiphenyl	5mg/kg	N.D.	N.D.	N.D.	N.D.	/
Polybromobiphenyl(PBBs)	/	N.D.	N.D.	N.D.	N.D.	1000
Monobromobiphenyl ether	5mg/kg	N.D.	N.D.	N.D.	N.D.	/
Bibromobiphenyl ether	5mg/kg	N.D.	N.D.	N.D.	N.D.	/
Tribromobiphenyl ether	5mg/kg	N.D.	N.D.	N.D.	N.D.	/
Tetrabromobiphenyl ether	5mg/kg	N.D.	N.D.	N.D.	N.D.	/
Pentabromobiphenyl ether	5mg/kg	N.D.	N.D.	N.D.	N.D.	/
Hexabromobiphenyl ether	5mg/kg	N.D.	N.D.	N.D.	N.D.	/
Heptabromobiphenyl ether	5mg/kg	N.D.	N.D.	N.D.	N.D.	/
Octabromobiphenyl ether	5mg/kg	N.D.	N.D.	N.D.	N.D.	/
Nonabromobiphenyl ether	5mg/kg	N.D.	N.D.	N.D.	N.D.	/
Decabromodiphenyl ether	5mg/kg	N.D.	N.D.	N.D.	N.D.	/
Polybromodiphenyl ether(PBDEs)	/	N.D.	N.D.	N.D.	N.D.	1000

Test Item(s)	MDL	Result(s) (mg/kg)				Limit (mg/kg)
		28	38	40	41	
Monobromobiphenyl	5mg/kg	N.D.	N.D.	N.D.	N.D.	/
Dibromobiphenyl	5mg/kg	N.D.	N.D.	N.D.	N.D.	/
Tribromobiphenyl	5mg/kg	N.D.	N.D.	N.D.	N.D.	/
Tetrabromobiphenyl	5mg/kg	N.D.	N.D.	N.D.	N.D.	/
Pentabromobiphenyl	5mg/kg	N.D.	N.D.	N.D.	N.D.	/
Hexabromobiphenyl	5mg/kg	N.D.	N.D.	N.D.	N.D.	/
Heptabromobiphenyl	5mg/kg	N.D.	N.D.	N.D.	N.D.	/
Octabromobiphenyl	5mg/kg	N.D.	N.D.	N.D.	N.D.	/
Nonabromobiphenyl	5mg/kg	N.D.	N.D.	N.D.	N.D.	/
Decabromodiphenyl	5mg/kg	N.D.	N.D.	N.D.	N.D.	/
Polybromobiphenyl(PBBs)	/	N.D.	N.D.	N.D.	N.D.	1000
Monobromobiphenyl ether	5mg/kg	N.D.	N.D.	N.D.	N.D.	/
Bibromobiphenyl ether	5mg/kg	N.D.	N.D.	N.D.	N.D.	/
Tribromobiphenyl ether	5mg/kg	N.D.	N.D.	N.D.	N.D.	/
Tetrabromobiphenyl ether	5mg/kg	N.D.	N.D.	N.D.	N.D.	/
Pentabromobiphenyl ether	5mg/kg	N.D.	N.D.	N.D.	N.D.	/
Hexabromobiphenyl ether	5mg/kg	N.D.	N.D.	N.D.	N.D.	/
Heptabromobiphenyl ether	5mg/kg	N.D.	N.D.	N.D.	N.D.	/
Octabromobiphenyl ether	5mg/kg	N.D.	N.D.	N.D.	N.D.	/
Nonabromobiphenyl ether	5mg/kg	N.D.	N.D.	N.D.	N.D.	/
Decabromodiphenyl ether	5mg/kg	N.D.	N.D.	N.D.	N.D.	/
Polybromodiphenyl ether(PBDEs)	/	N.D.	N.D.	N.D.	N.D.	1000

Test Item(s)	MDL	Result(s) (mg/kg)					Limit (mg/kg)
		53	58	60	75	88	
Monobromobiphenyl	5mg/kg	N.D.	N.D.	N.D.	N.D.	N.D.	/
Dibromobiphenyl	5mg/kg	N.D.	N.D.	N.D.	N.D.	N.D.	/
Tribromobiphenyl	5mg/kg	N.D.	N.D.	N.D.	N.D.	N.D.	/
Tetrabromobiphenyl	5mg/kg	N.D.	N.D.	N.D.	N.D.	N.D.	/
Pentabromobiphenyl	5mg/kg	N.D.	N.D.	N.D.	N.D.	N.D.	/
Hexabromobiphenyl	5mg/kg	N.D.	N.D.	N.D.	N.D.	N.D.	/
Heptabromobiphenyl	5mg/kg	N.D.	N.D.	N.D.	N.D.	N.D.	/
Octabromobiphenyl	5mg/kg	N.D.	N.D.	N.D.	N.D.	N.D.	/
Nonabromobiphenyl	5mg/kg	N.D.	N.D.	N.D.	N.D.	N.D.	/
Decabromodiphenyl	5mg/kg	N.D.	N.D.	N.D.	N.D.	N.D.	/
Polybromobiphenyl(PBBs)	/	N.D.	N.D.	N.D.	N.D.	N.D.	1000
Monobromobiphenyl ether	5mg/kg	N.D.	N.D.	N.D.	N.D.	N.D.	/
Bibromobiphenyl ether	5mg/kg	N.D.	N.D.	N.D.	N.D.	N.D.	/
Tribromobiphenyl ether	5mg/kg	N.D.	N.D.	N.D.	N.D.	N.D.	/
Tetrabromobiphenyl ether	5mg/kg	N.D.	N.D.	N.D.	N.D.	N.D.	/
Pentabromobiphenyl ether	5mg/kg	N.D.	N.D.	N.D.	N.D.	N.D.	/
Hexabromobiphenyl ether	5mg/kg	N.D.	N.D.	N.D.	N.D.	N.D.	/
Heptabromobiphenyl ether	5mg/kg	N.D.	N.D.	N.D.	N.D.	N.D.	/
Octabromobiphenyl ether	5mg/kg	N.D.	N.D.	N.D.	N.D.	N.D.	/
Nonabromobiphenyl ether	5mg/kg	N.D.	N.D.	N.D.	N.D.	N.D.	/
Decabromodiphenyl ether	5mg/kg	N.D.	N.D.	N.D.	N.D.	N.D.	/
Polybromodiphenyl ether(PBDEs)	/	N.D.	N.D.	N.D.	N.D.	N.D.	1000

Note:

- mg/kg=ppm=parts per million;
- N.D.=Not Detected (<MDL);
- MDL=method detection limit.

Test results of Phthalates

Test Item(s)	MDL	Result(s) (mg/kg)				Limit (mg/kg)
		2	3	5	6	
Dibutyl phthalate(DBP)	30mg/kg	N.D.	N.D.	N.D.	N.D.	1000
Butyl benzyl phthalate(BBP)	30mg/kg	N.D.	N.D.	N.D.	N.D.	1000
Di (2-ethylhexyl) phthalate(DEHP)	30mg/kg	N.D.	N.D.	N.D.	N.D.	1000
Diisobutyl phthalate (DIBP)	30mg/kg	N.D.	N.D.	N.D.	N.D.	1000

Test Item(s)	MDL	Result(s) (mg/kg)				Limit (mg/kg)
		9	10	12	18	
Dibutyl phthalate(DBP)	30mg/kg	N.D.	N.D.	N.D.	N.D.	1000
Butyl benzyl phthalate(BBP)	30mg/kg	N.D.	N.D.	N.D.	N.D.	1000
Di (2-ethylhexyl) phthalate(DEHP)	30mg/kg	N.D.	N.D.	N.D.	N.D.	1000
Diisobutyl phthalate (DIBP)	30mg/kg	N.D.	N.D.	N.D.	N.D.	1000

Test Item(s)	MDL	Result(s) (mg/kg)				Limit (mg/kg)
		19	20	23	24	
Dibutyl phthalate(DBP)	30mg/kg	N.D.	N.D.	N.D.	N.D.	1000
Butyl benzyl phthalate(BBP)	30mg/kg	N.D.	N.D.	N.D.	N.D.	1000
Di (2-ethylhexyl) phthalate(DEHP)	30mg/kg	N.D.	N.D.	N.D.	N.D.	1000
Diisobutyl phthalate (DIBP)	30mg/kg	N.D.	N.D.	N.D.	N.D.	1000

Test Item(s)	MDL	Result(s) (mg/kg)				Limit (mg/kg)
		26	27	28	30	
Dibutyl phthalate(DBP)	30mg/kg	N.D.	N.D.	N.D.	N.D.	1000
Butyl benzyl phthalate(BBP)	30mg/kg	N.D.	N.D.	N.D.	N.D.	1000
Di (2-ethylhexyl) phthalate(DEHP)	30mg/kg	N.D.	N.D.	N.D.	N.D.	1000
Diisobutyl phthalate (DIBP)	30mg/kg	N.D.	N.D.	N.D.	N.D.	1000

Test Item(s)	MDL	Result(s) (mg/kg)					Limit (mg/kg)
		96	98	99	100	101	
Dibutyl phthalate(DBP)	30mg/kg	N.D.	N.D.	N.D.	N.D.	N.D.	1000
Butyl benzyl phthalate(BBP)	30mg/kg	N.D.	N.D.	N.D.	N.D.	N.D.	1000
Di (2-ethylhexyl) phthalate(DEHP)	30mg/kg	N.D.	N.D.	N.D.	N.D.	N.D.	1000
Diisobutyl phthalate (DIBP)	30mg/kg	N.D.	N.D.	N.D.	N.D.	N.D.	1000

Test Item(s)	MDL	Result(s) (mg/kg)					Limit (mg/kg)
		102	103	106	107	109	
Dibutyl phthalate(DBP)	30mg/kg	N.D.	N.D.	N.D.	N.D.	N.D.	1000
Butyl benzyl phthalate(BBP)	30mg/kg	N.D.	N.D.	N.D.	N.D.	N.D.	1000
Di (2-ethylhexyl) phthalate(DEHP)	30mg/kg	N.D.	N.D.	N.D.	N.D.	N.D.	1000
Diisobutyl phthalate (DIBP)	30mg/kg	N.D.	N.D.	N.D.	N.D.	N.D.	1000

Test Item(s)	MDL	Result(s) (mg/kg)					Limit (mg/kg)
		110	111	112	114	116	
Dibutyl phthalate(DBP)	30mg/kg	N.D.	N.D.	N.D.	N.D.	N.D.	1000
Butyl benzyl phthalate(BBP)	30mg/kg	N.D.	N.D.	N.D.	N.D.	N.D.	1000
Di (2-ethylhexyl) phthalate(DEHP)	30mg/kg	N.D.	N.D.	N.D.	N.D.	N.D.	1000
Diisobutyl phthalate (DIBP)	30mg/kg	N.D.	N.D.	N.D.	N.D.	N.D.	1000

Test Item(s)	MDL	Result(s) (mg/kg)					Limit (mg/kg)
		119	120	121	122	127	
Dibutyl phthalate(DBP)	30mg/kg	N.D.	N.D.	N.D.	N.D.	N.D.	1000
Butyl benzyl phthalate(BBP)	30mg/kg	N.D.	N.D.	N.D.	N.D.	N.D.	1000
Di (2-ethylhexyl) phthalate(DEHP)	30mg/kg	N.D.	N.D.	N.D.	N.D.	N.D.	1000
Diisobutyl phthalate (DIBP)	30mg/kg	N.D.	N.D.	N.D.	N.D.	N.D.	1000

Note:

- mg/kg=ppm=parts per million;
- N.D.=Not Detected (<MDL);
- MDL=method detection limit.

Test components:

1	White-coated metal	2	White label paper
3	Silver plastic	4	Silver metal
5	Grey plastic	6	Black plastic
7	Silver metal	8	Silver metal
9	Black plastic	10	Red plastic
11	Silver metal	12	Black plastic
13	Silver metal	14	Black-coated metal
15	Silver metal	16	White-coated metal
17	Silver metal	18	Red plastic
19	Black plastic	20	Black plastic
21	Silver metal	22	Silver metal
23	White plastic	24	Green plastic
25	White-coated metal	26	Black plastic
27	Green PCB	28	White plastic
29	Silver metal	30	Red plastic
31	Silver metal	32	Transparent plastic
33	Red plastic	34	Silver metal
35	Black plastic	36	Black plastic
37	Red plastic	38	Brown plastic
39	Silver metal	40	Black plastic
41	Black plastic	42	Black metal
43	Black plastic	44	Black plastic
45	Silver metal	46	Transparent plastic
47	Transparent glass	48	Black plastic
49	White plastic	50	Black plastic
51	Silver metal	52	Silver metal
53	Orange plastic	54	Silver metal
55	Black plastic	56	White plastic
57	Black plastic	58	Black plastic
59	Silver metal	60	Black plastic

61	Black metal	62	Yellow tape
63	Copper-colored metal	64	Silver metal
65	Silver metal	66	Black plastic
67	Silver metal	68	White ceramic
69	Silver metal	70	Black plastic
71	Black plastic	72	Silver metal
73	Silver metal	74	Soldering
75	Yellow plastic	76	Silver metal
77	Black plastic	78	White ceramic
79	Golden metal	80	Black plastic
81	Brown plastic	82	Black plastic
83	Copper-colored metal	84	Black metal
85	Black plastic	86	Grey plastic
87	Silver metal	88	Blue PCB
89	Silver metal	90	Silver metal
91	Red plastic	92	Black plastic
93	Black plastic	94	Red plastic
95	Red plastic	96	White plastic
97	Silver metal	98	White plastic
99	Red plastic	100	Black plastic
101	Blue plastic	102	Orange plastic
103	Yellow plastic	104	Copper-colored metal
105	Silver metal	106	Black plastic
107	Blue tape	108	Silver metal
109	Transparent plastic	110	Transparent plastic
111	Blue tape	112	White plastic
113	Aluminum foil	114	Positive powder
115	Copper foil	116	Negative powder
117	Silver metal	118	Silver metal
119	Black plastic	120	Black plastic
121	Grey plastic	122	Black plastic
123	Positive lug	124	Negative lug

125	Silver metal	126	Silver metal
127	Yellow plastic		

Chemical Test Process

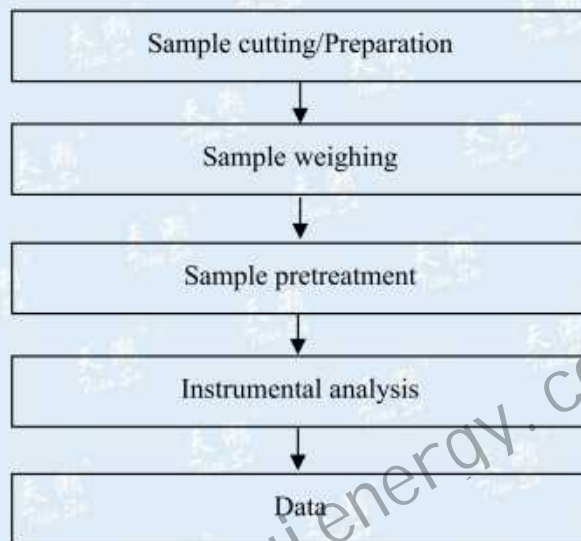


Photo of the sample

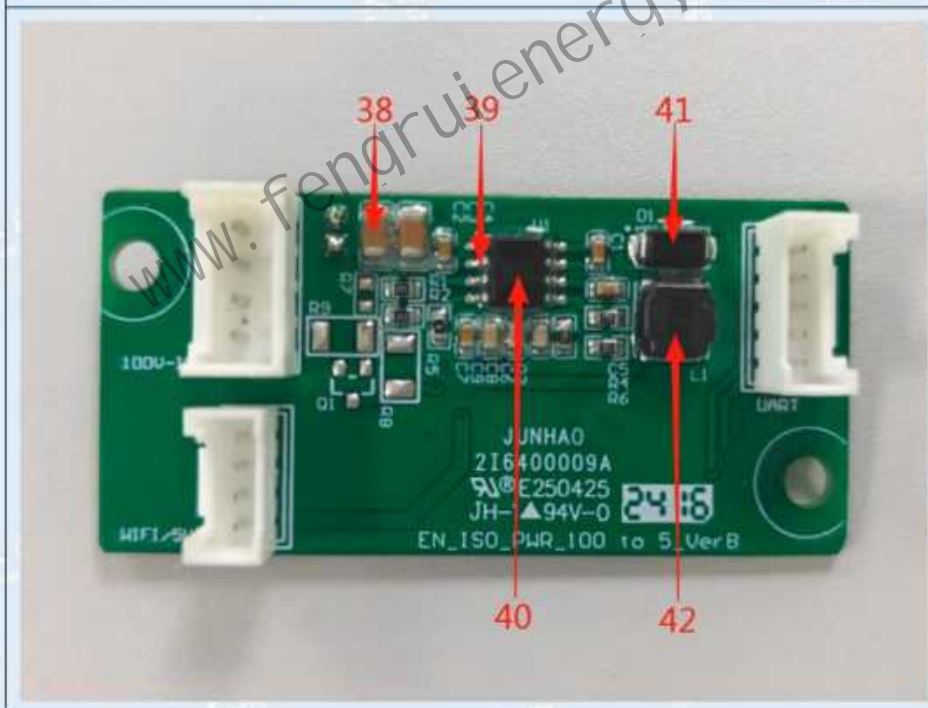


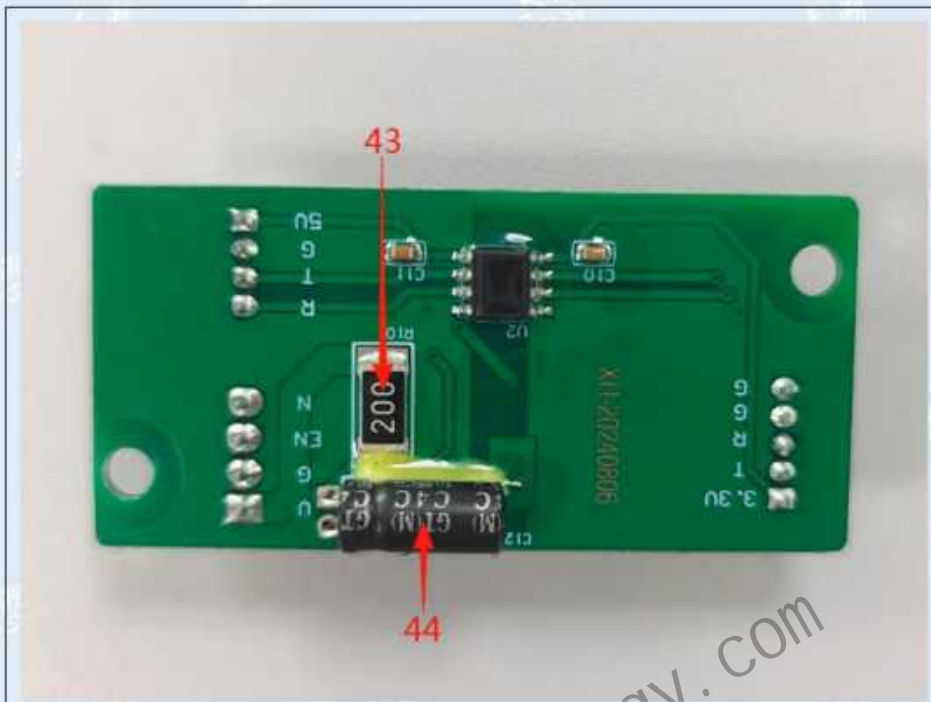
Sample

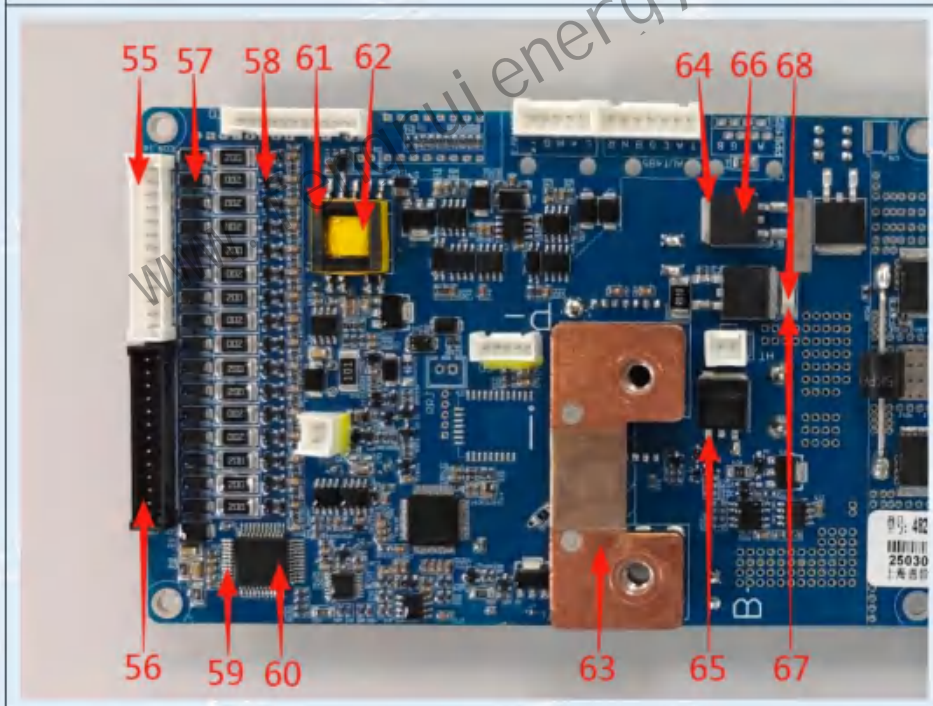
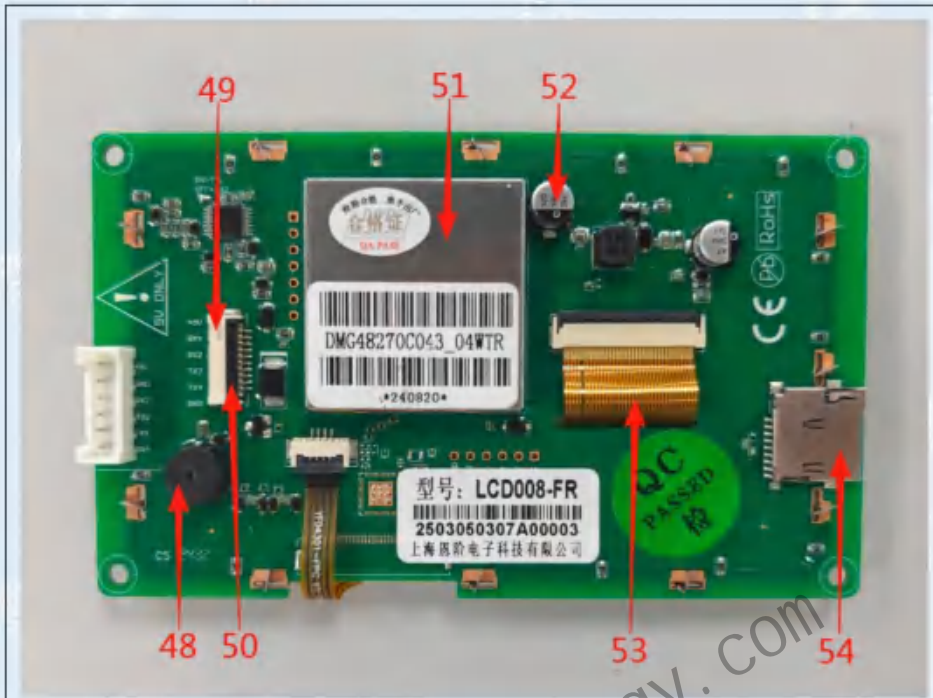


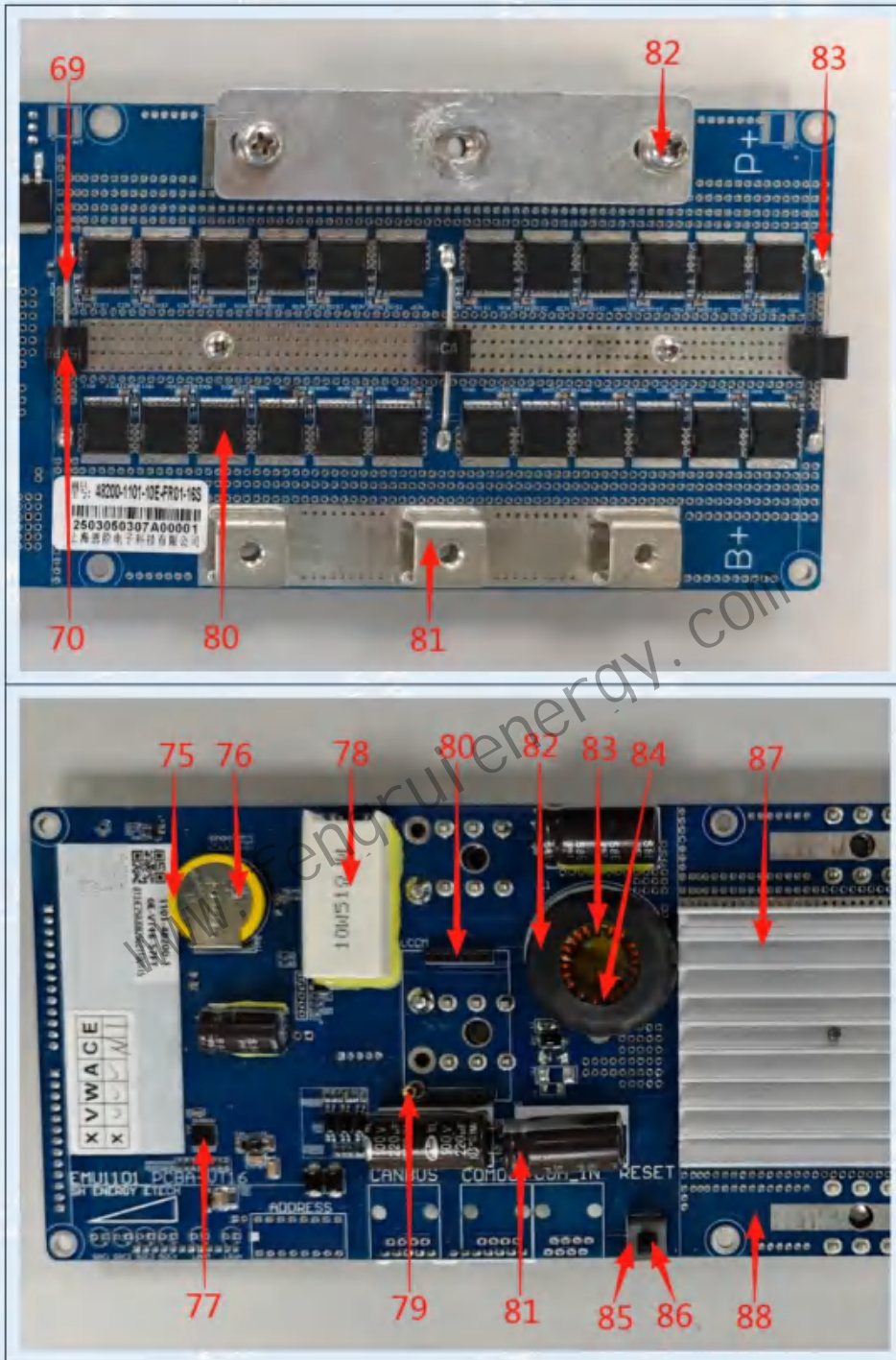






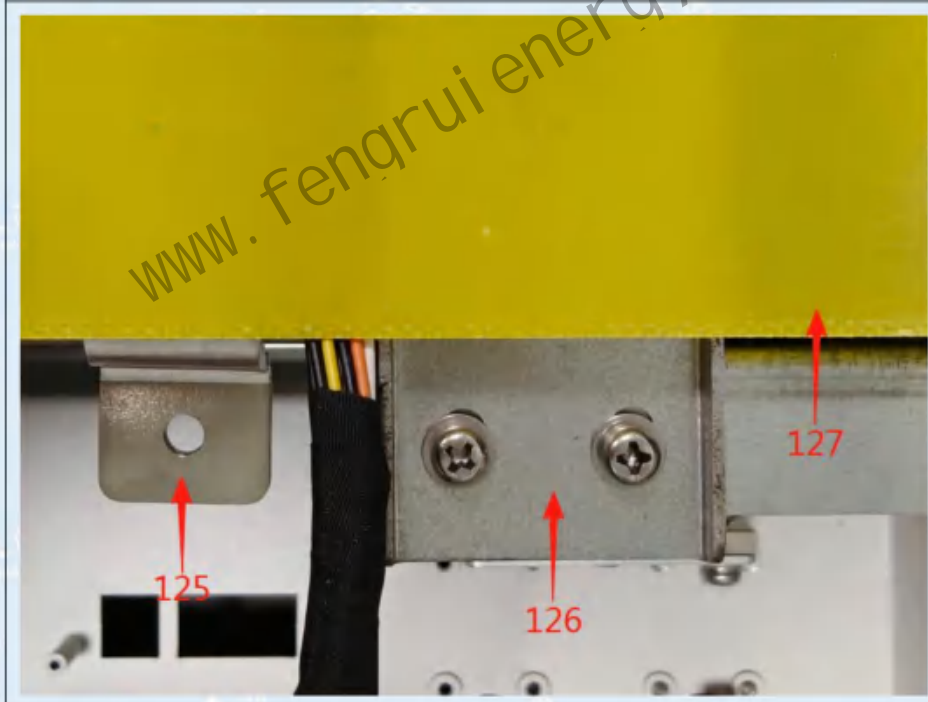
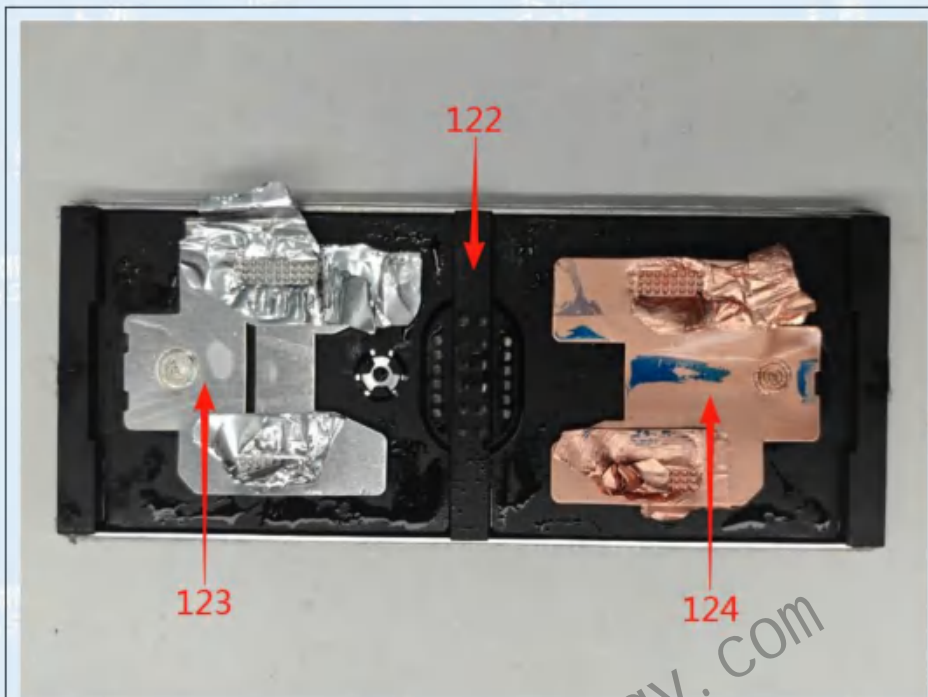












***** End of report *****

This report is invalid without the Special Seal of Tiansu. This report shall not be altered, increased or deleted. The results shown in this report refer only to the sample(s) tested.